



Insurance | Risk Management | Consulting

# Avoiding Rear-End Collisions



Office of Risk Management

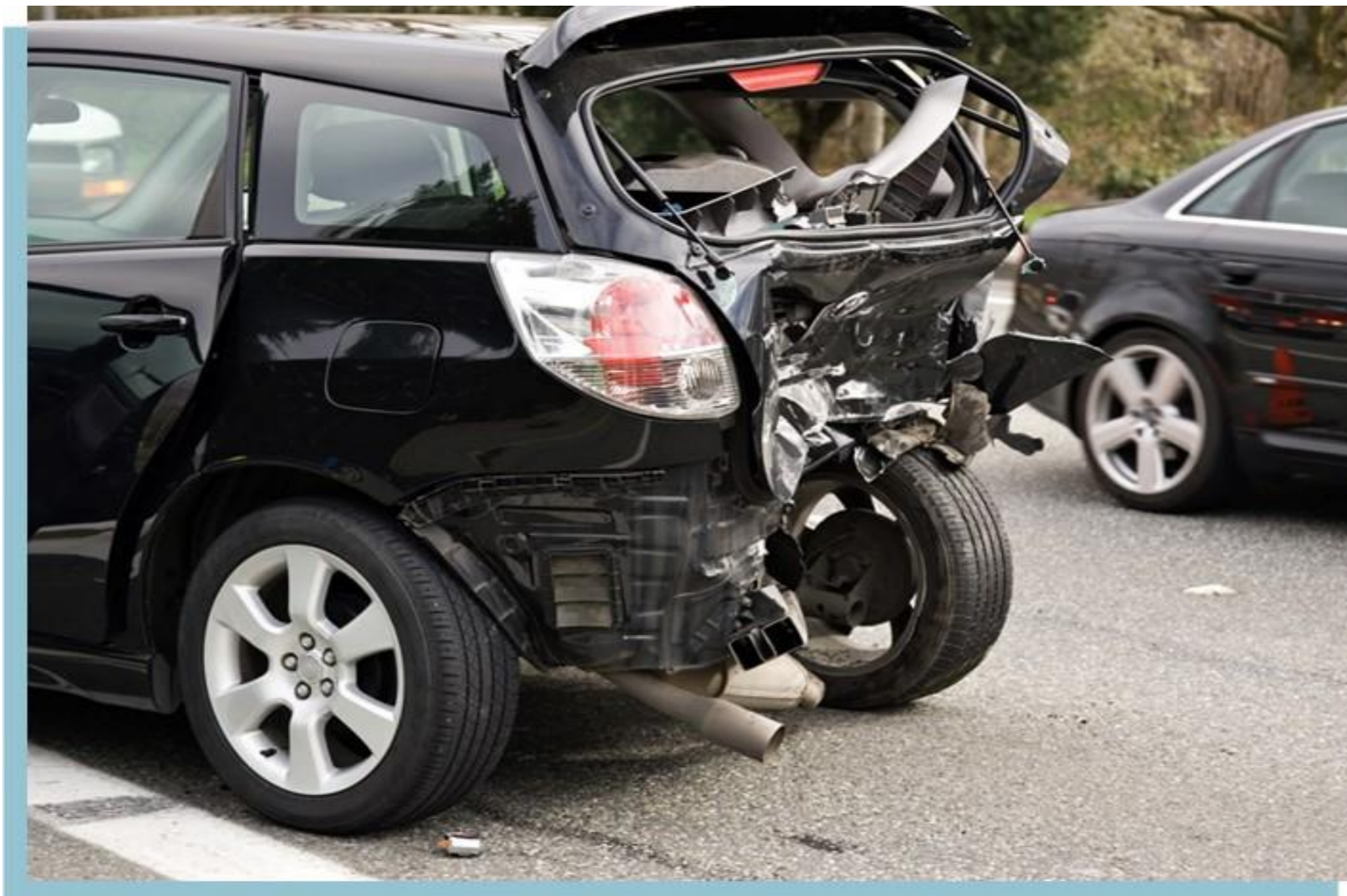




**Gallagher**

Insurance | Risk Management | Consulting

# Rear – End Accident Avoidance





# Rear-end Accident Contributing Factors

- Distractions
- Speeding or driving too fast for conditions
- Inadequate following distance
- Driver fatigue
- Securing & Positioning Load (trailers)
- Mechanical breakdown

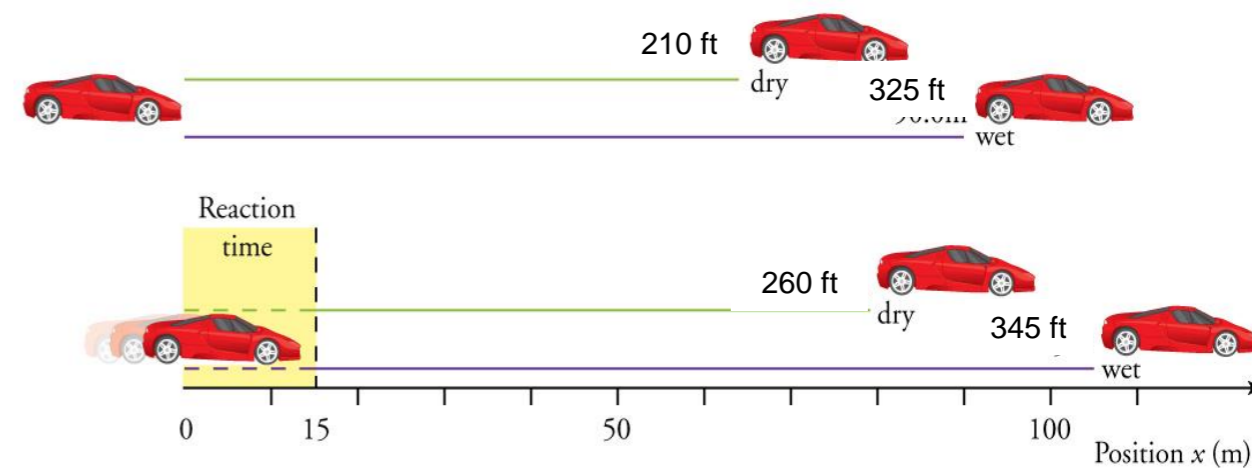
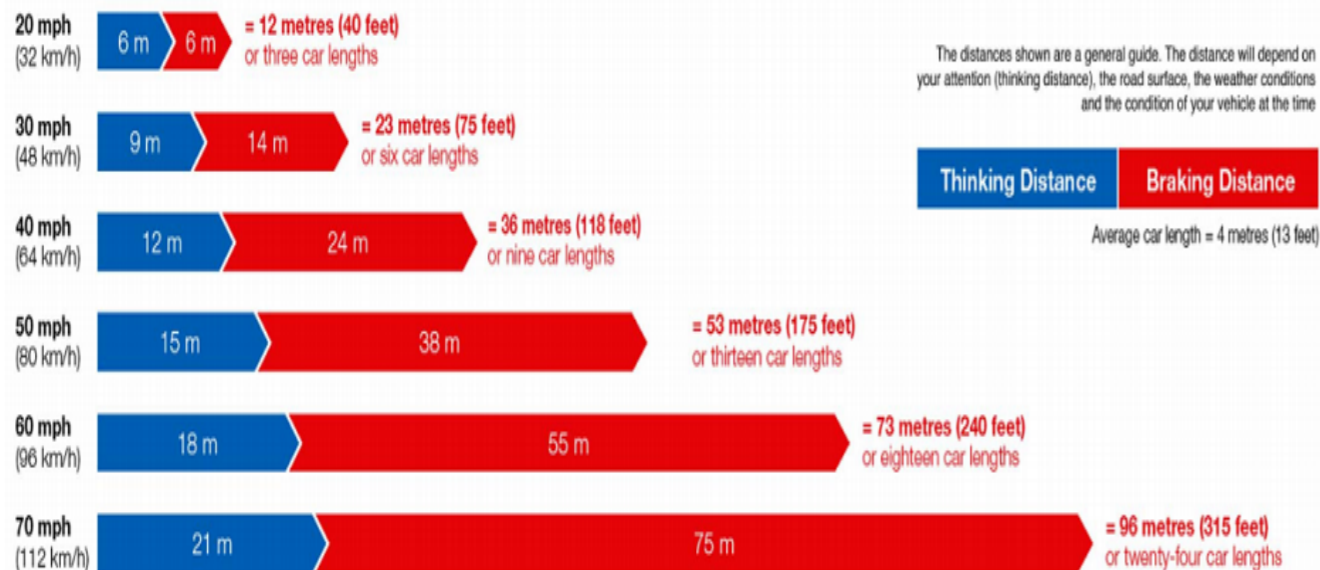


# “Be Aware Distances”

- Perception
- Reaction
- Braking



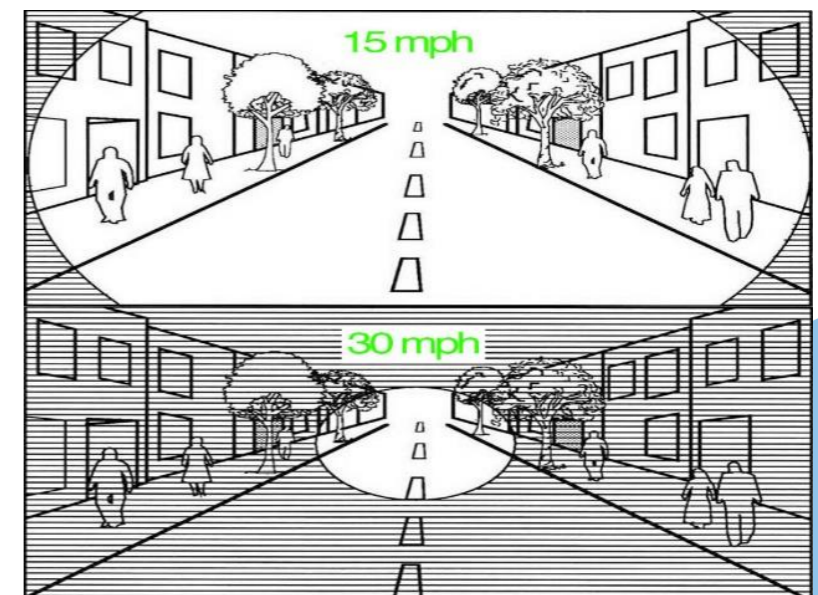
## Typical Stopping Distances





# Perception Distance

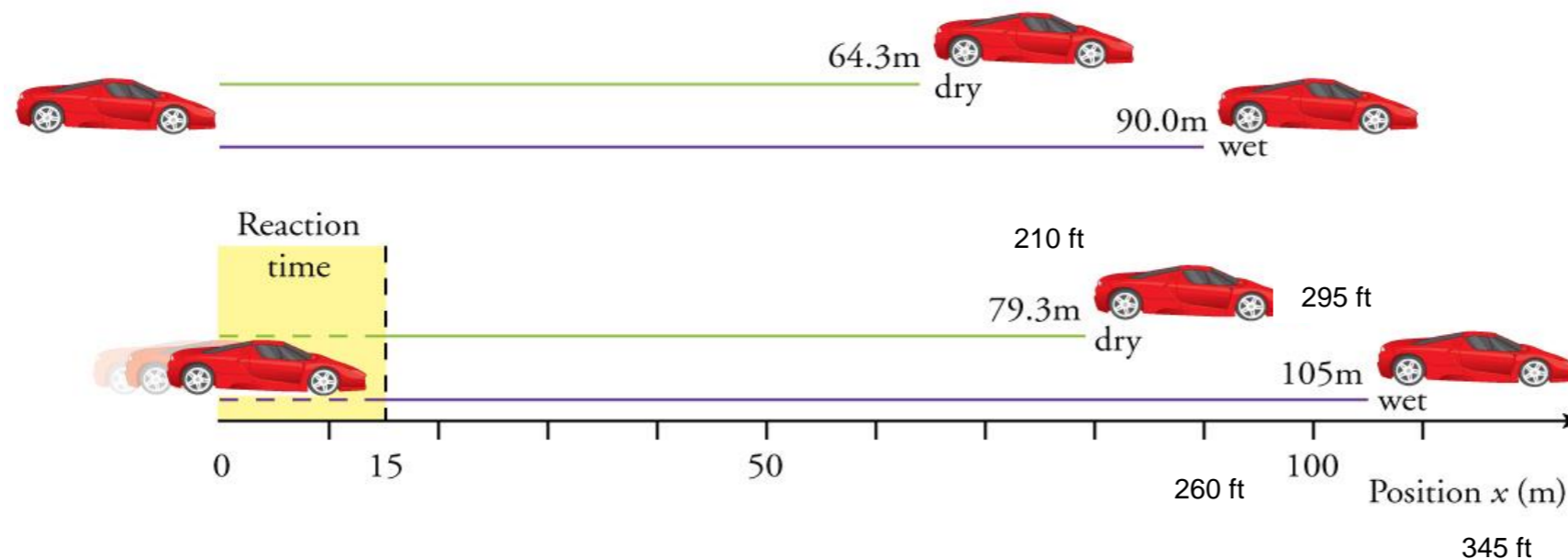
Be aware of perception distance: the number of feet your vehicle travels from the time an event occurs, such as brake lights ahead, until you **see** and **recognize** it.





# Reaction Distance

Be aware of reaction distance: the number of feet your vehicle travels from the time you *recognize* the *hazard* and when you *brake*.

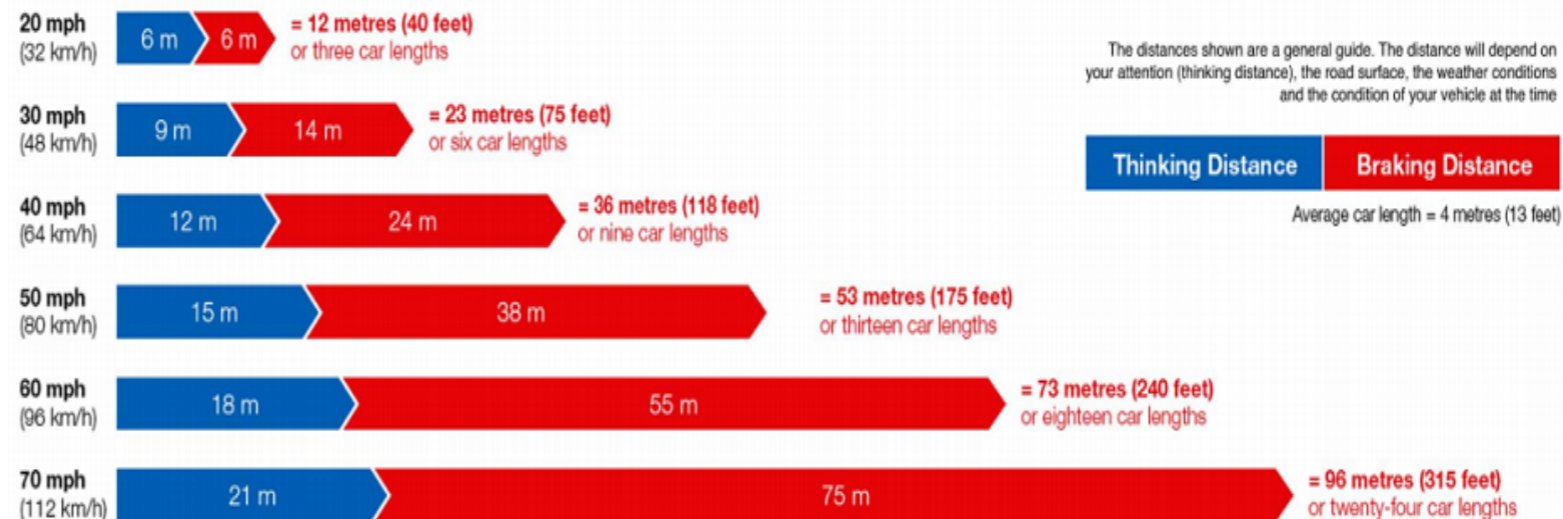




# Braking Distance

Be aware of braking distance: the number of feet your vehicle travels from the time you brake and when your vehicle stops is braking distance.

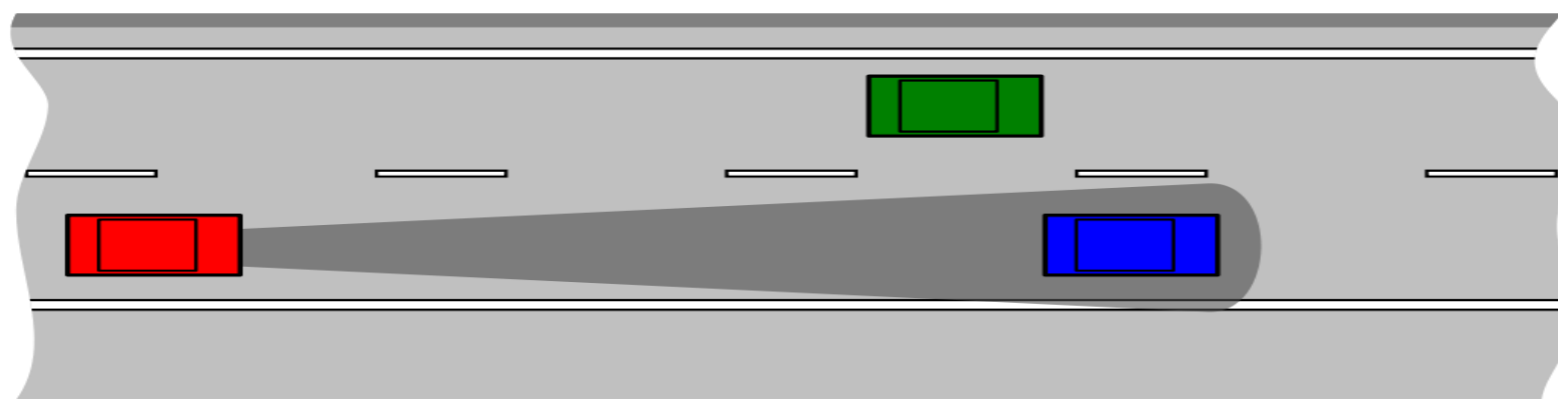
## Typical Stopping Distances





# Tips to avoid rear-end accidents

- Maintain a safe following distance: ( 2-4 sec between vehicles).
- Stay alert and prepared: Ready to react, foot off of accelerator ready to apply brake.
- Scan and anticipate: Look far ahead, watch for brake lights, changing traffic signal, pedestrians, emergency vehicles etc.







**Gallagher**

Insurance | Risk Management | Consulting

# Tips to avoid rear-end accidents- cont'd.

- Plan your trip: Monitor weather, traffic reports.
- Consider road conditions: Increase following distance during adverse weather.
- Slow down in advance of intersections: Previous vehicles may have leaked fluids; rain; snow - they all can make the road slick.





**Gallagher**

Insurance | Risk Management | Consulting

# Tips to avoid rear-end accidents- cont'd.

- Avoid stopping too closely to the vehicle in front of you at intersections: Keep at least one car length between your car and other vehicles.
- Yellow lights mean caution: Don't assume vehicle in front of you is going through the intersection.





## Tips to avoid rear-end accidents- cont'd.

- Make sure your brake lights work: they give the vehicle behind you a warning of your intentions.
- Keep your windows clean: Clear fields of vision are required so you can see what the other driver is doing and react accordingly.





**Gallagher**

Insurance | Risk Management | Consulting

## Tips to avoid rear-end accidents- cont'd.

- Be aware of and avoid aggressive drivers: Try to move away as safely and quickly as possible.
- Do not drive under the influence Drugs or Alcohol.
- No driving if you are tired or ill.
- Do not ride your brakes: The following vehicle can not determine your intentions.
- Always wear your seatbelt.



FreeFoto.com



**Gallagher**

Insurance | Risk Management | Consulting

## Tips to avoid rear-end accidents- cont'd.

- Avoid distracting activities while driving: Examples include texting, using cell phone, reading, writing, eating, reaching for distant or moving objects etc.
- Follow posted speed limits: Remember to adjust for adverse conditions.



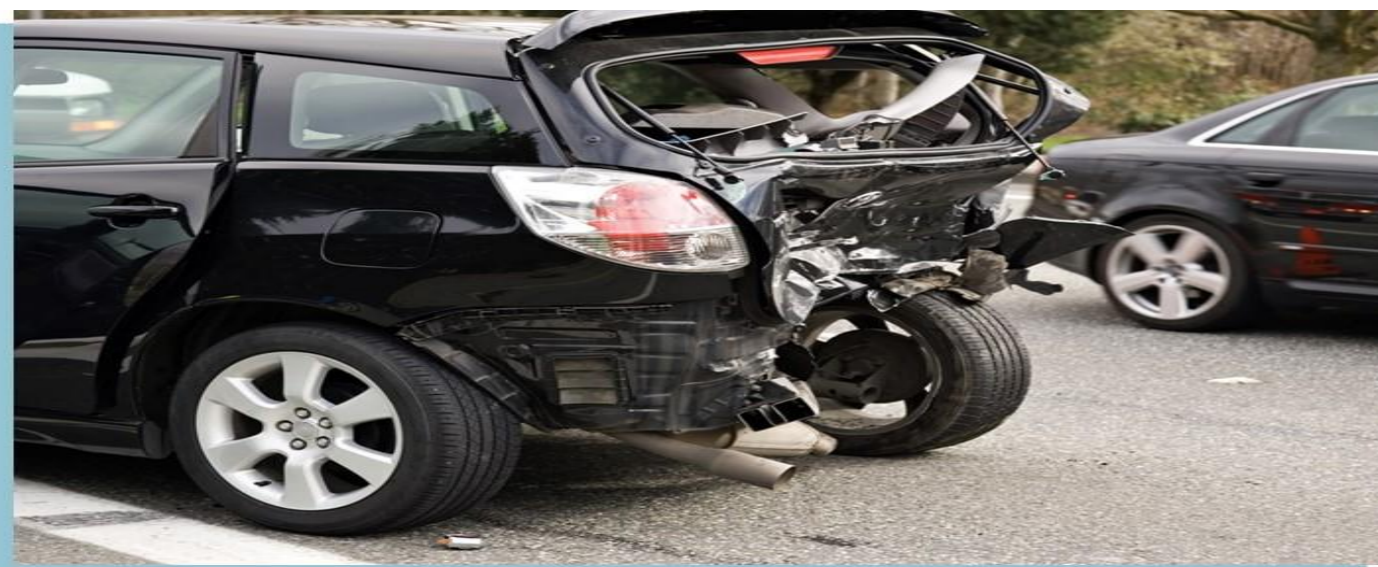


**Gallagher**

Insurance | Risk Management | Consulting

# Avoid Rear-End Collisions

Following the tips that have been presented, you will decrease the chances of being involved in a rear-end accident, and if you are in a rear-end accident the tips will increase your chances of survival!



A close-up photograph of a road surface. On the left, there are two parallel yellow lines painted on the asphalt. To the right of these lines, the words "DRIVE SAFELY" are painted in large, bold, yellow, sans-serif capital letters. The text is arranged in two lines: "DRIVE" on the top line and "SAFELY" on the bottom line. The asphalt has a dark, pebbled texture.

**DRIVE  
SAFELY**