



Louisiana Watershed Initiative Update

MARCH 19, 2019

Mrs. Alex Gelpi Carter, AICP

Resilience Planning Manager, OCD-DRU

LOUISIANA
WATERSHED
INITIATIVE

working together for sustainability and resilience

Agenda

- Introduction/Recap
- Project Funding: Round 1
- Statewide Data & Modeling
- Outreach Activities



Intro to the Louisiana Watershed Initiative



It's not a matter of if Louisiana will flood again, it's when. **NOW** is the time to act.



**WE'VE BEEN HERE BEFORE
IT'S TIME TO GET IT RIGHT.**





Water Knows No Boundary

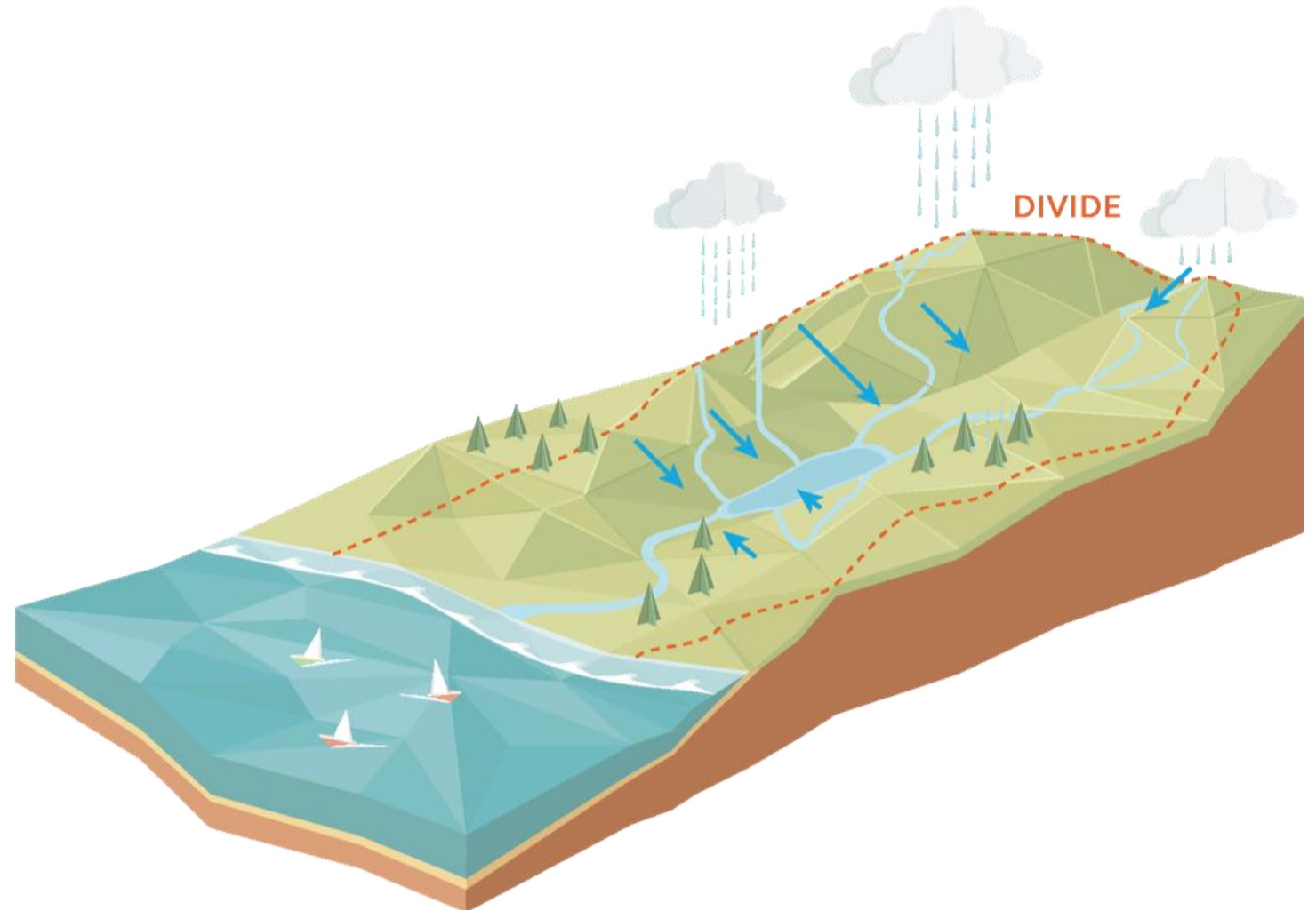
It requires a new way
of thinking

It requires a watershed
approach



What is a Watershed?

A watershed is an area of land that all drains to a single point.



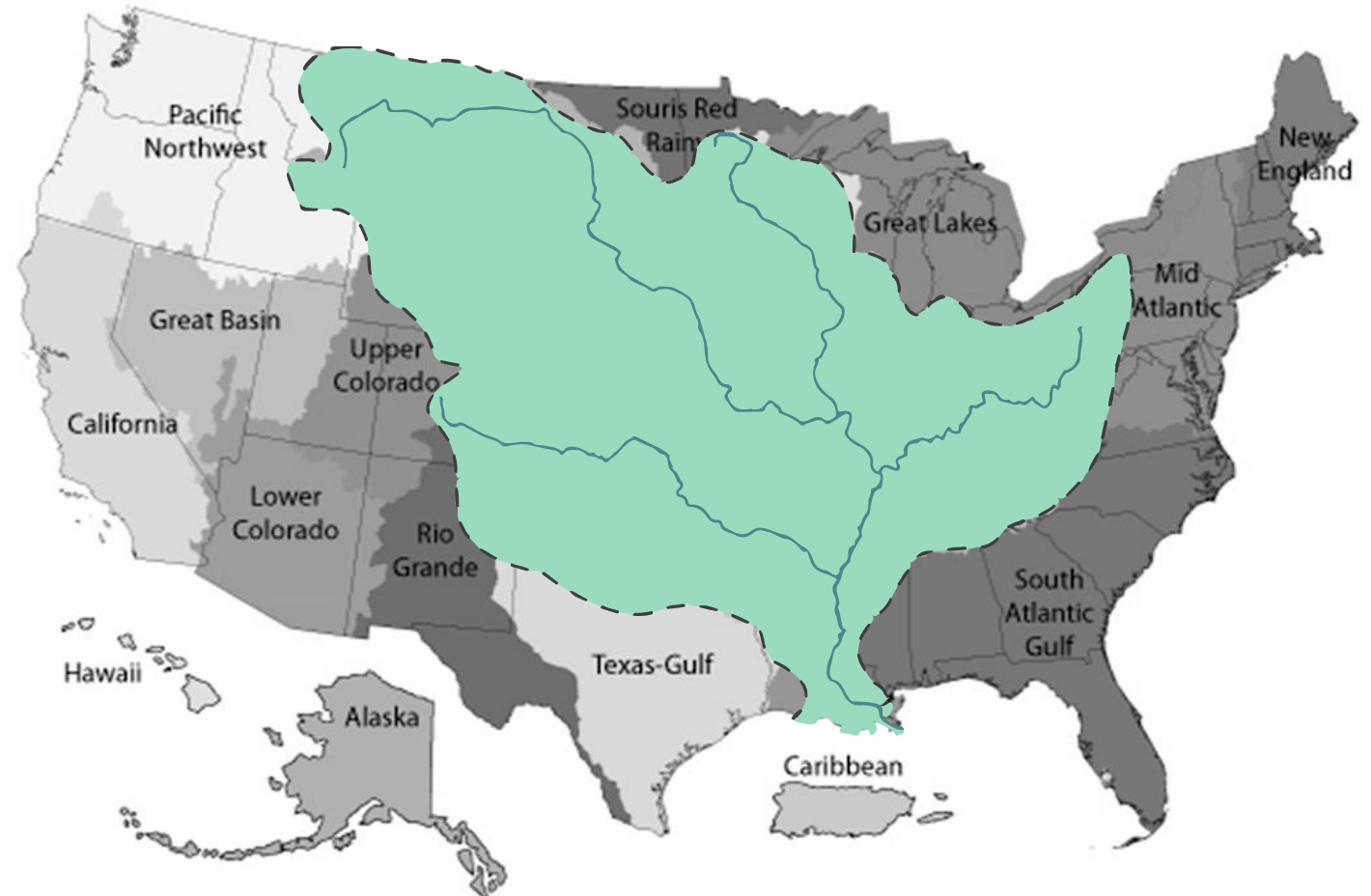
What is a Watershed?

A watershed is an area of land that all drains to a single point.



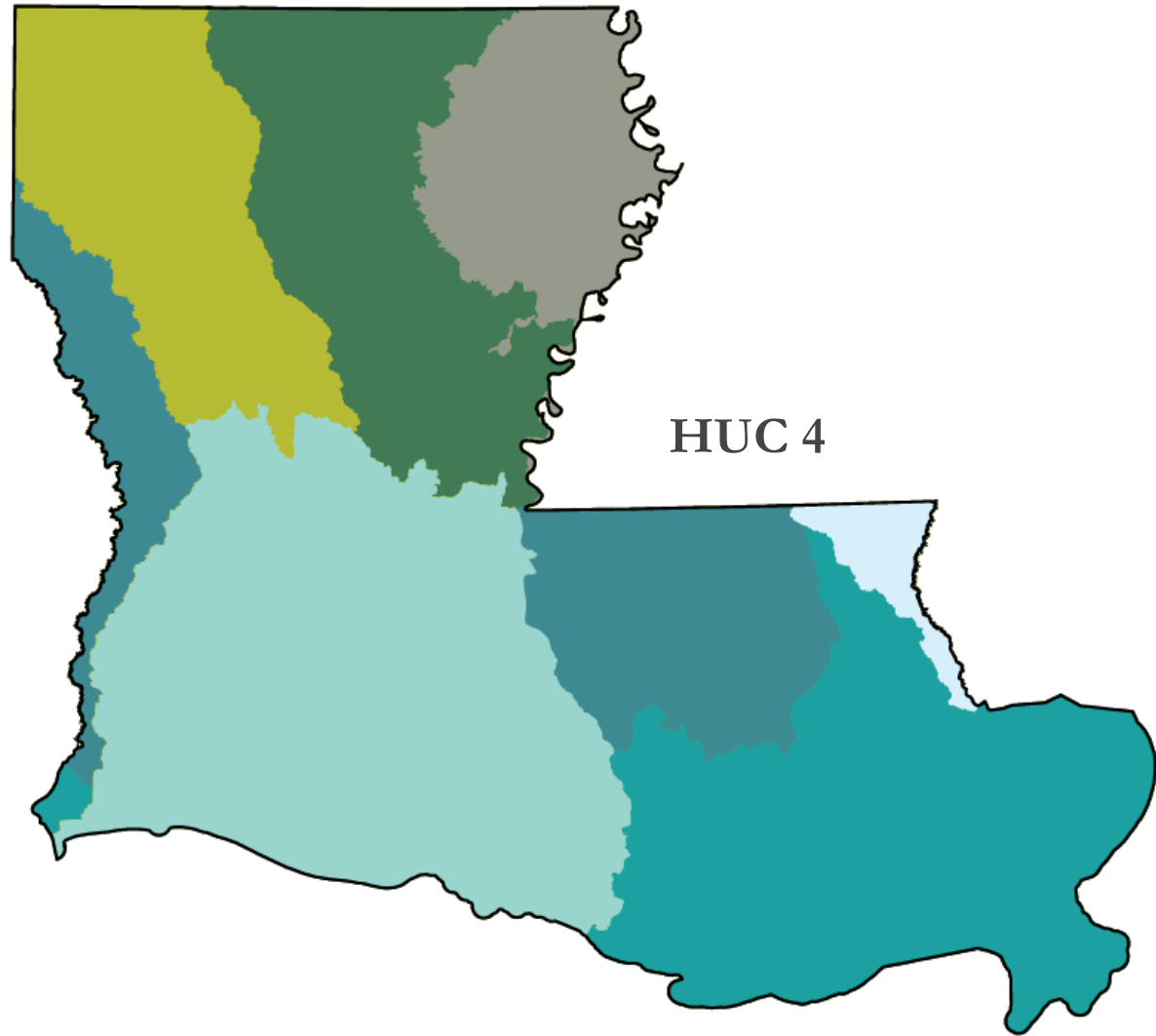
What is a Watershed?

A watershed is an area of land that all drains to a single point.



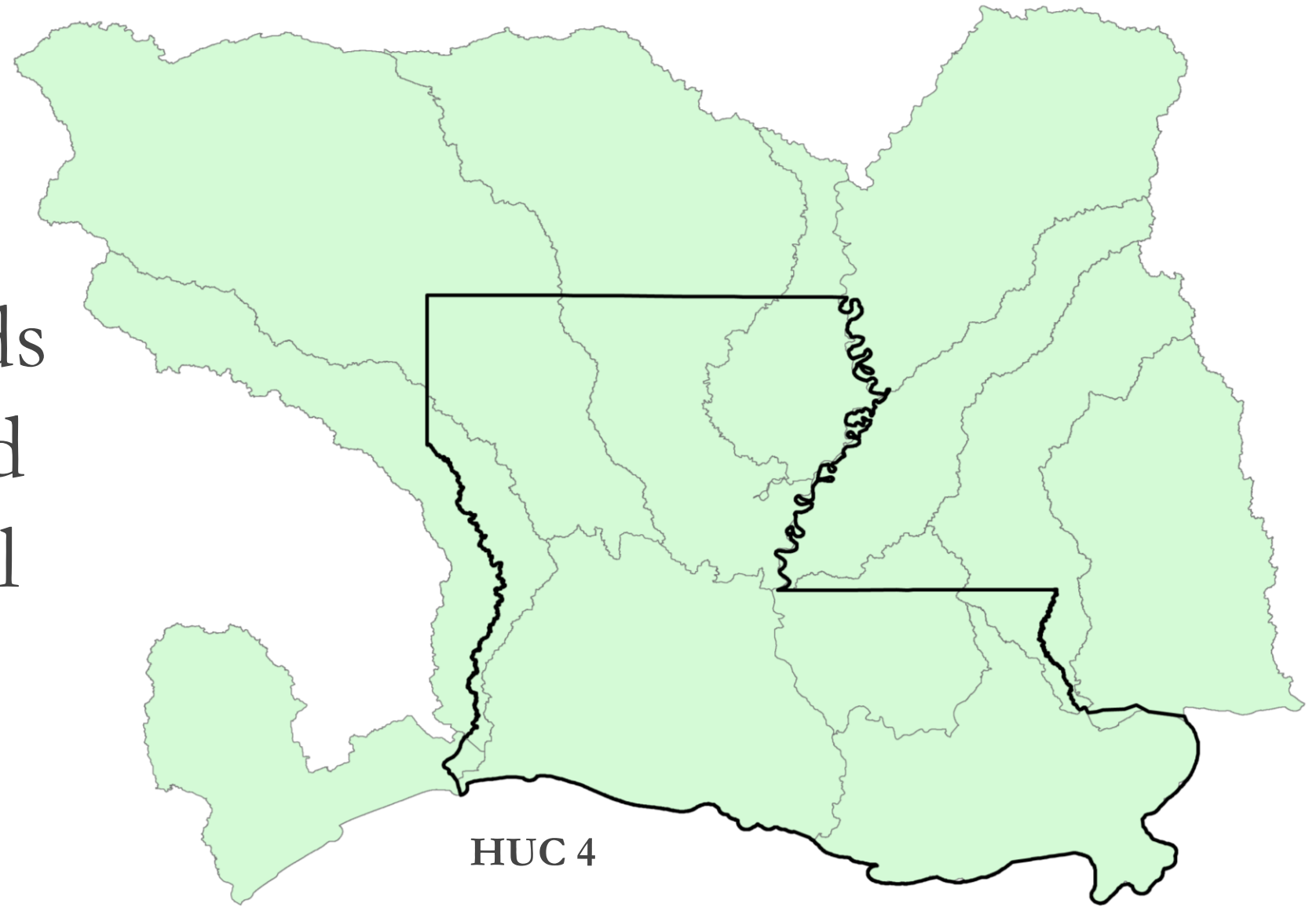
Louisiana's Watersheds

Our watersheds are not defined by our political boundaries.



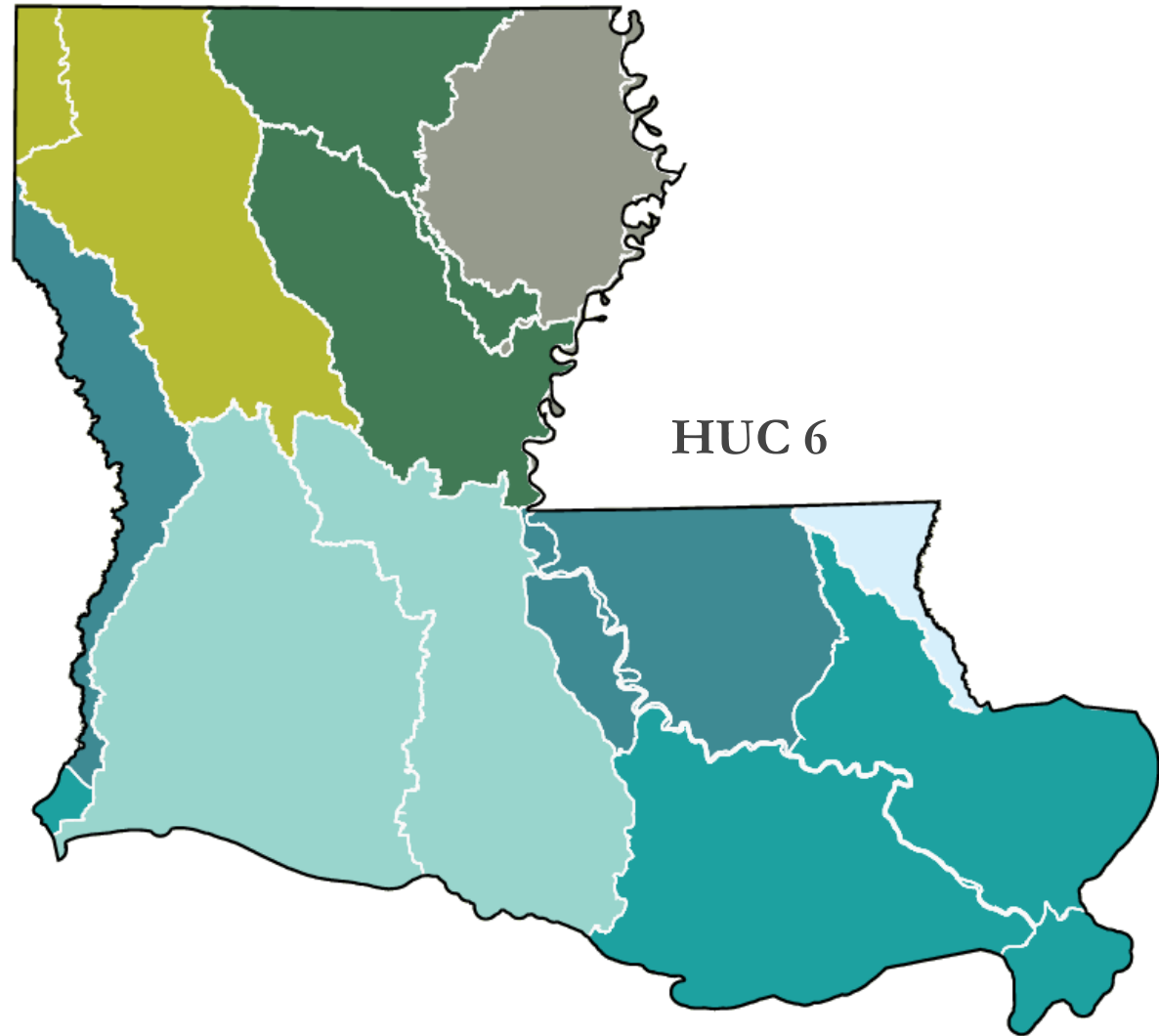
Louisiana's Watersheds

Our watersheds are not defined by our political boundaries.



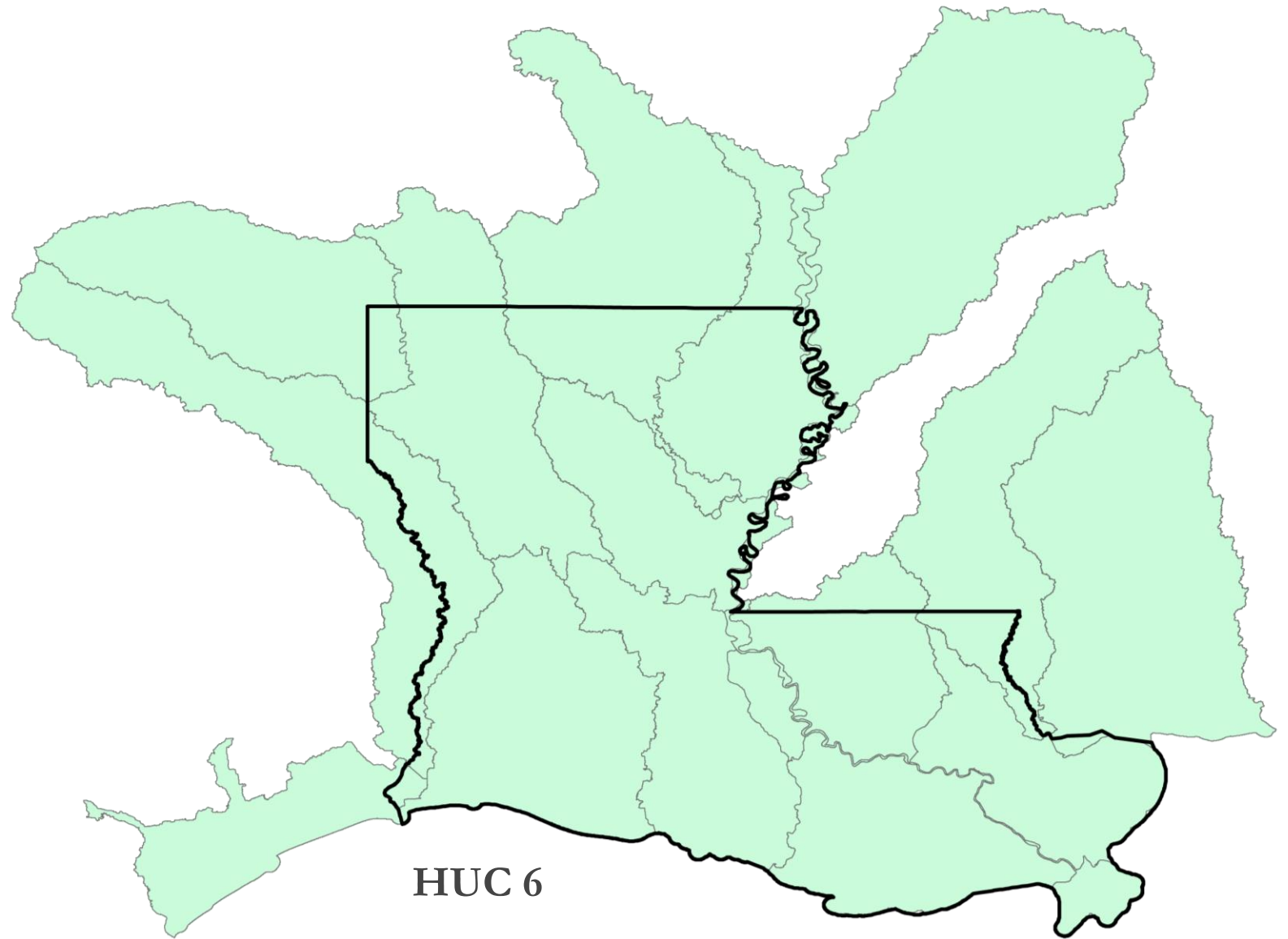
Louisiana's Watersheds

Our watersheds are not defined by our political boundaries.



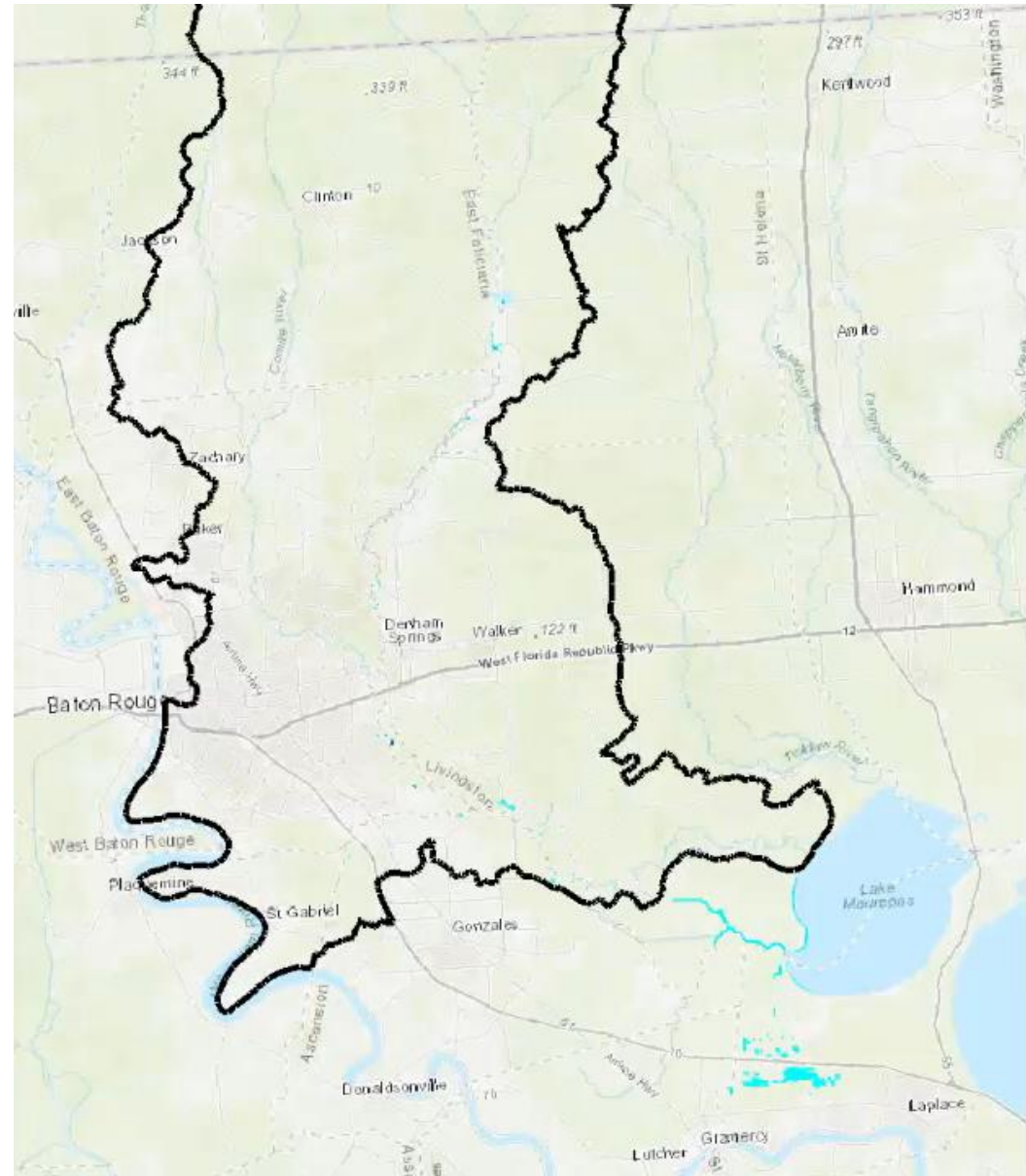
Louisiana's Watersheds

Our watersheds are not defined by our political boundaries.



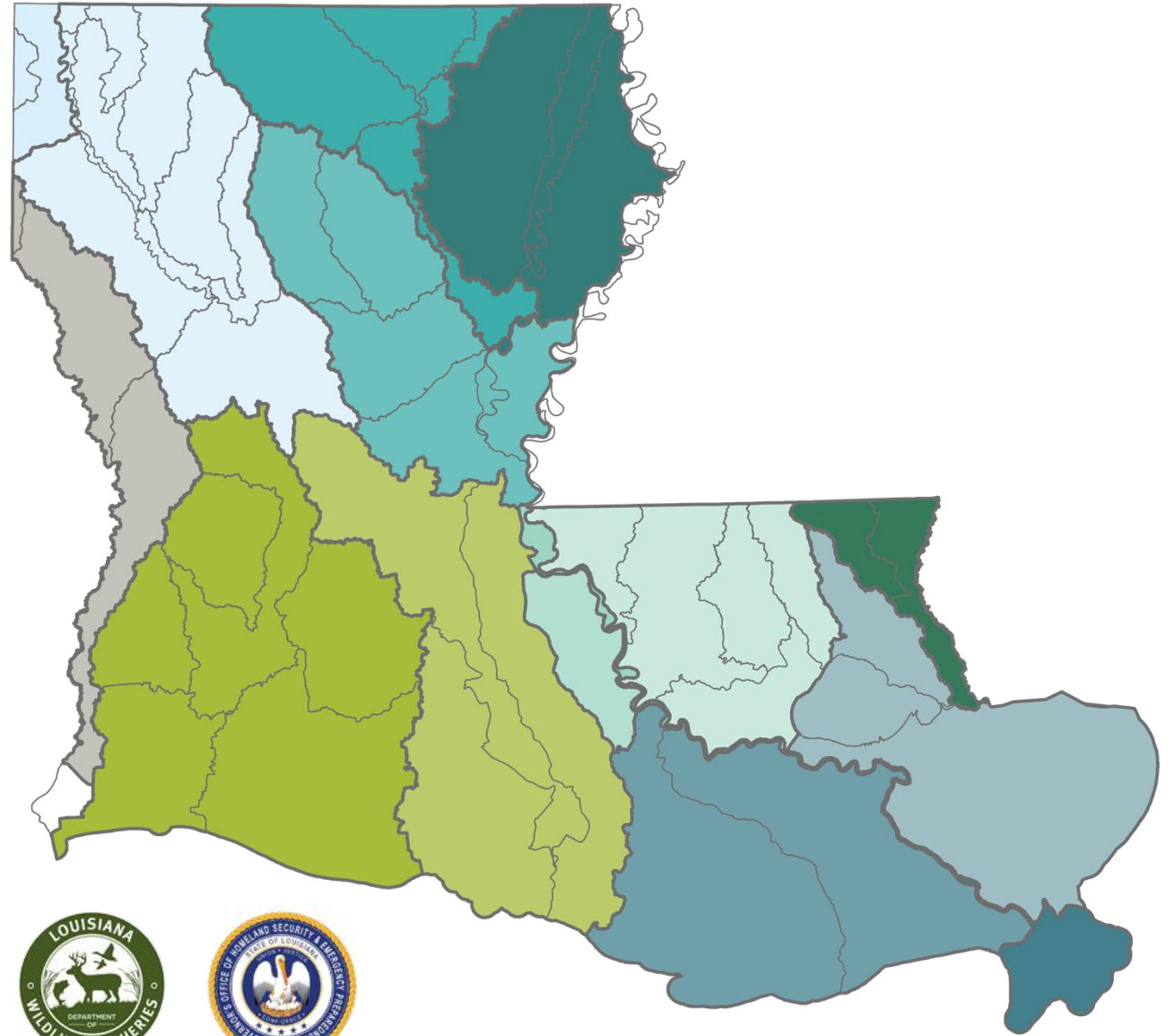
Louisiana's Watersheds

A Real-Time View:
“Great Flood of August 2016”



Our Mission

Reduce flood risk and improve floodplain management across the state, including through maximizing the natural and beneficial functions of the floodplain.



**IMPORTANT FOR
OUR FUTURE...**

**AN OPPORTUNITY TO MAKE
A DIFFERENCE NOW.**



Past Legislative Efforts



UPDATE

Local & Regional Projects

Round 1

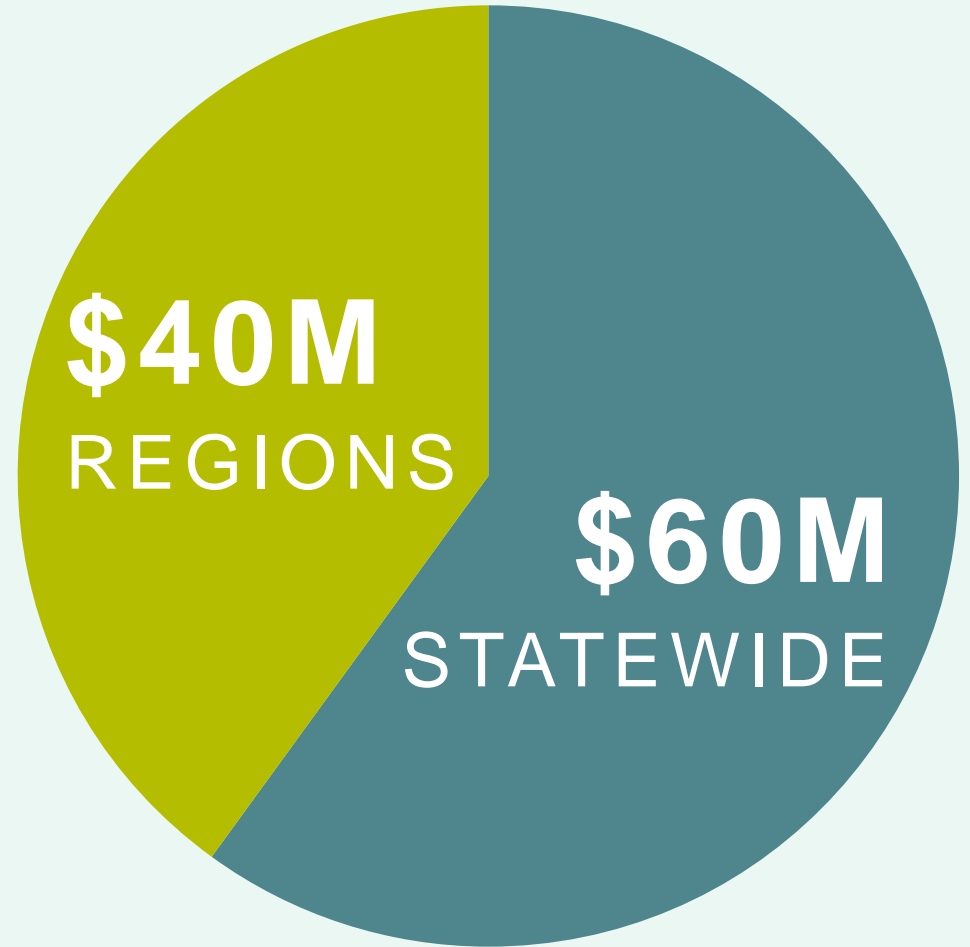
Funding Distribution
Goals and Objectives
Eligible Activities



Round 1 Funding Opportunity

\$100 Million Total

COMPETITIVE
PROCESS



Round 1 Funding Opportunity

GOALS & OBJECTIVES

- Reduce Flood Risk
- Transparency
- Encourage Cooperation
- Reward and Incentivize Resilient Land Use and Development



Round 1 Funding Opportunity

ELIGIBLE ACTIVITIES

Characterized generally as **LOW RISK, HIGH REWARD PROJECTS** in absence of statewide modeling, including:

- Floodplain Restoration and Preservation
- Regional Flood Storage
- Critical Facilities and Infrastructure Flood Mitigation
- Stormwater Management - Gray Infrastructure
- Stormwater Management - Green Infrastructure
- Non-structural mitigation (Residential/Commercial)
- Other innovative and/or replicable flood control activities



UPDATE

Statewide Data & Modeling

Overall Approach
Progress



Overall Approach

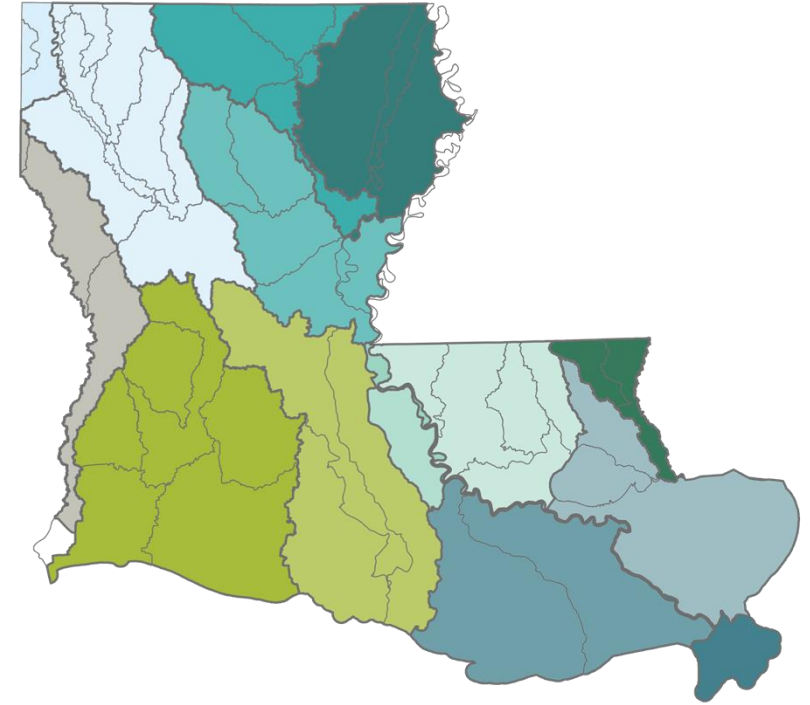
STATEWIDE DATA & MODELING

Phase 1: Pre-Programming

Design statewide monitoring network, a modeling approach and standards.

Phase 2: Program Implementation

QA/QC, ongoing assessment of mitigation project outcomes and impacts, and development of a long-term maintenance and access plan for monitoring and modeling products.



Statewide Modeling Framework

PROGRESS

- DOTD will facilitate procurement
- Projected advertisement posted to DOTD website
- Regional stakeholders & agencies provided an opportunity for input in accordance with DOTD's procurement process
- Models sequenced in accordance with data availability and around watershed boundaries



Outreach Activities

2018 Listening Tour

2019 Engagement Plan

Best Practices Summit

Parish Meetings

March 28, 2019 Council Meeting

Interstate Summit



Statewide Listening Tour WHERE WE'VE BEEN

BATON ROUGE

SHREVEPORT

ALEXANDRIA

HAMMOND

LAFAYETTE

MONROE

HOUMA

LAKE CHARLES

555

engineers, planners, floodplain managers, public works staff, emergency responders, code enforcement staff, elected officials, and more



Statewide Listening Tour

KEY STATEWIDE THEMES



- “2018 Statewide Listening Tour Key Findings Summary Report”
- Webinar hosted on January 25, 2019
- Available online at watershed.la.gov



2019 Outreach & Engagement Plan

COMMENT ONLINE AT WATERSHED.LA.GOV



WATERSHED
COUNCIL



LA
STAKEHOLDERS



Best Practices Interstate Summit

FEBRUARY 19, 2019

Building the Foundation:
Sharing Lessons
Learned & Collaborating
on Challenges Specific
to Louisiana
Lafayette, LA



Regional/Parish Meetings

SPRING 2019

- Watershed approach
- Modeling and procurement strategy
- Project funding opportunities
- Support for local cooperative efforts
- “Best Fit” watershed boundary delineation



Watershed Council Meeting

MARCH 28, 2019

Baton Rouge, LA

Neighboring State Summit

LATE SUMMER 2019

Regional Partnership Building:
Shared Challenges Across State Lines

New Orleans, LA





Questions?

watershed@la.gov





Thank You

watershed@la.gov

